



PARA Tech Product Spotlight

ACME ELECTRONICS AES SERIES LINEAR WINDING MACHINES

The AES series, built on PLC and servo motor technology, provides a custom-designed solution for both simple and complex winding pitching tasks. With pitch accuracy of 0.001mm and turns accuracy of 0.1mm, this series supports a variety of winding modes and features a user-friendly touch screen HMI.

They are designed for precise pitch control, offering wide variable pitch values within a single coil layer, ideal for applications such as LVDT, heaters, sensors, and more. Customizable to meet specific customer needs, these machines feature a servo-based system with an HMI interface for accurate pitch adjustments. With a maximum winding length of 1000mm (standard 150mm), they support wire diameters ranging from 0.02 to 1.00 mm, with winding widths of 150mm or 450mm. Capable of speeds up to 1000/3000 RPM, the AES Series ensures high-performance and reliability for intricate winding tasks.



AES winding machines offer precise pitch control, for LVDT, heaters, and sensors.

https://www.acmeengg.com/

3ONEDATA PROFINET INDUSTRIAL ETHERNET SWITCH

- Support 4 Gigabit fiber ports (SFP slot) and 16 100M copper ports
  - Support PROFINET RT real-time communication and meet the requirements of consistency category CC-B
  - Support PROFINET MRP network redundancy, improve network reliability, reconfiguration time ≤200ms
  - Adopt SW-Ring patented technology, support single ring, coupling ring, chain, Dual-homing, automatic recovery time of network failure < 20ms
  - Support dual power supply, input voltage: 12~48VDC
  - Support -40~75 wide operating temperature range.
- IES6200-PN-16T4GS-2P48 is 20-port 100M/Gigabit layer 2 managed PROFINET industrial Ethernet switch, which supports PROFINET RT real-time communication and conforms to the consistency category CC-B. This product provides 100M copper ports, Gigabit SFP

slots and other interfaces, and it adopts DIN-Rail mounting which can meet the requirements of different scenes.

The network management system supports various network protocols and industry standards, such as PROFINET, STP/RSTP/MSTP, ERPS, MRP, 802.1Q VLAN, QoS function, IGMP static multicast, SNMP, LLDP, RMON, DHCP, NTP, etc. It has perfect management functions, support port configuration, access control, network diagnosis, rapid configuration, online upgrade, etc.; It can support CLI, WEB, Telnet, SNMP and other access methods; Provide GSD equipment description file, and realize simple and consistent configuration STEP 7 or TIA Portal configuration tool. Network management system could bring you great user experience through its friendly interface design and easy and convenient operation.



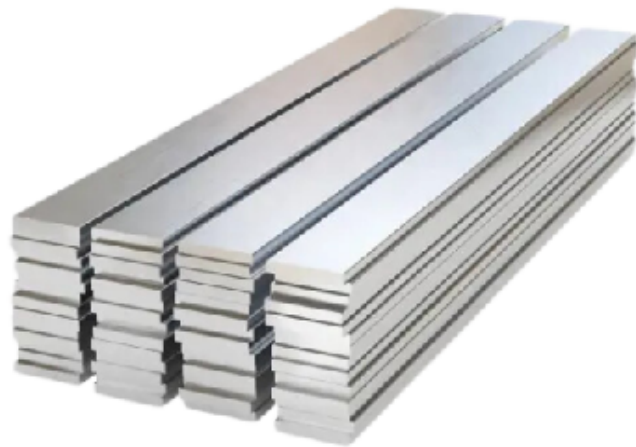
Onedata IES6200-PN-16T4GS-2P48 – 20-port PROFINET switch built for real-time communication and industrial reliability.



https://www.3onedata.com/

Fabrik CARBON STEEL PLATE

Fabrik specializes in reliable and efficient supply chains, serving diverse sectors with steel products. Operating six electric arc furnace (EAF) steel mills and value-added coating facilities, the company ships approximately 13 million tons of steel annually. With a focus on sustainability, Fabrik follows a circular manufacturing model that uses recycled ferrous scrap as the primary input, reducing carbon emissions. This approach positions Fabrik as a leader in EAF steelmaking and sustainable manufacturing, driven by innovative teams advancing climate change initiatives and high-quality production standards.



CARBON STEEL PLATE- Fabrik specializes in reliable and efficient supply chains, serving diverse sectors with steel products.



https://fabrik.vamtam.com/

Fabrik offers high-quality carbon steel plates, produced using advanced Electric Arc Furnace (EAF) technology. This method utilizes recycled ferrous scrap, resulting in lower carbon emissions and aligning with sustainable manufacturing practices

Key Features:

- Versatile Applications: Suitable for construction, automotive, energy, and industrial sectors.
- Sustainable Production: Manufactured using recycled materials, reducing environmental impact.
- Reliable Supply Chain: Supported by multiple EAF mills and coating operations, ensuring consistent quality and timely delivery

ACCELUS ROBOTICS MC7 MOTION CONTROLLER



The MC7 Motion controller offers dual -motor control ,encoder support, and a touch display, ideal for robotics and automation system

It is designed for precise dual-motor control, featuring 16 NPN inputs and 12 NPN outputs for seamless integration with various devices. It supports external encoders or Manual Pulse Generators (MPG) for accurate positioning and offers RS422/RS485 communication protocols for flexible connectivity. The controller includes a 7-inch capacitive touch display for user-friendly interaction

and is suitable for applications in robotics, CNC machinery, and automation systems.

It is designed for precise dual-motor control, featuring 16 NPN inputs and 12 NPN outputs for seamless integration with various devices. It supports external encoders or Manual Pulse Generators (MPG) for accurate positioning and offers RS422/RS485 communication protocols for flexible connectivity.



https://accelusrobotics.com/

The controller includes a 7-inch capacitive touch display for user-friendly interaction and is suitable for applications in robotics, CNC machinery, and automation systems.

It is a high-performance 7-axis motion controller with an integrated EtherCAT master, engineered for precision control in automation, robotics, and CNC applications.





# PARA Tech Product Spotlight

## ACROBOT ROBO INSPECTION



*Robo inspection uses advanced robotic systems with sensors and AI to conduct precise, real-time quality checks in industries like manufacturing and aerospace.*

It involves using advanced robotic systems to conduct thorough and precise inspections across various industries. Equipped with sensors, cameras, and AI algorithms, these robots can detect defects, measure dimensions, and assess quality in real-time. They are utilized in sectors such as manufacturing, aerospace,

and infrastructure, where precision is critical. Robo inspection enhances accuracy, speed, and safety, reducing the need for human intervention in hazardous environments. By automating routine checks, these systems ensure consistent quality control and help prevent costly errors, making them an integral part of modern industrial processes. As industries evolve toward smarter manufacturing, robo inspection is emerging as a game-changer in industrial quality assurance. Leveraging the power of advanced robotics, AI algorithms, and high-precision sensors and cameras, these systems conduct real-time inspections with unmatched accuracy and consistency.

From manufacturing floors to aerospace assembly lines and infrastructure projects, robo inspection ensures critical parameters like defect detection, dimensional accuracy, and surface integrity are met — every time. By automating routine and hazardous inspection tasks, these robots not only improve safety but also significantly reduce downtime and human error.

As industries prioritize zero-defect manufacturing, robo inspection is no longer a futuristic concept — it's an essential pillar of modern Industry 4.0 practices.



<https://acrobot.in/>

## ACT SENSORS AS30 SERIES- MASS AIR FLOW SENSOR

ACT Sensors introduces the AS30 Series, a line of thermal mass air flow sensors designed for high-precision gas flow measurement. Utilizing third-generation microfabricated thermal flow die technology, these sensors employ thermopiles to detect temperature gradients caused by mass flow, ensuring excellent signal-to-noise ratio and repeatability. The solid-state thermal isolation structure eliminates the need for surface cavities or fragile membranes, making the sensors resistant to clogging and pressure shocks.

### FEATURES:

- Unsurpassed performance in a robust and cost effective package.
- “Solid state” sensing core (no surface cavity or fragile membrane) resistant to clogging and pressure shock.
- Highly accurate (4% reading typ.)
- Fast response time (5 ms typ.)
- Linear output and temperature compensation.
- Long-term stability with minimal null drift.

### APPLICATIONS:

- Oxygen concentrators
- Nebulizers
- CPAP equipment
- Leak detection
- Spectroscopy
- Mass flow controller
- Fuel cell control
- Environmental monitoring



**AS30 SERIES- mass air flow sensor AS-30 features third-generation thermal flow die, benefiting from the latest innovations**



<https://www.actsensor.net/index.html>

# PARA Tech Product Spotlight

## ADAGE INTEGRATED SOLUTION- HVAC FOR HAZARDOUS AREAS



**ADAGE Integrated Solution Analyzer Shelters for Zone 1 & Zone 2 applications with HVAC In-house Design and Manufacturing facility for SS316 /304.**

<https://www.adage-automation.com/>



Analyzer Shelters for Zone 1 & Zone 2 applications with HVAC  
In-house Design and Manufacturing facility for SS316 /304 .CRCA painted analyzer shelters for Hazardous areas for Zone 1 /Zone2 and GP .  
Experience of building 18 mtr x 7.5 mtr x 2.7 mtr Analyzer House with HVAC. These analyz-

## AG ELECTRONICS ULTRASONIC SENSORS

AG Electronics offers ultrasonic sensors in various sizes to cater to diverse industrial applications. These sensors are designed for non-contact measurement, utilizing high-frequency sound waves to detect objects and measure distances accurately.

### Product Range:

**Short-Range Sensors:**  
Sensing Range: Up to 5 meters  
Applications: Ideal for precise level measurement in tanks, open water resources, and reservoirs.  
Mounting Board Size: Compact design for easy installation; specific dimensions not specified.

### Medium-Range Sensors:

Sensing Range: Up to 7 meters  
Applications: Suitable for applications requiring accurate measurements at moderate distances.  
Mounting Board Size: Compact design for easy installation; specific dimensions not specified.

### Key Features:

**Non-Contact Measurement:** Utilizes ultrasonic waves for accurate distance and level detection without physical contact.  
**Environmental Resilience:** Designed to perform reliably in various industrial conditions.  
**Versatile Outputs:** Offers multiple output options, including analog current (4-20mA), analog voltage (0-5V & 0-10V), NPN/PNP (ON/OFF Signal), and serial communication (TTL, RS-485, RS-232).

### Long-Range Sensors:

Sensing Range: Up to 10 meters  
Applications: Best for scenarios needing precise measurements over greater distances.

**Mounting Board Size:** Compact design for easy installation; specific dimensions not specified.



<https://www.agelectronics.in/>



**AG Electronics offers ultrasonic sensors in various sizes to cater to diverse industrial applications.**

## PARA Tech Product Spotlight

### STAINLESS STEEL GAUGES

Adarsh Industries' stainless steel pressure gauges are engineered for durability and precision in corrosive and demanding environments. Featuring SS316 wetted parts and an IP65-rated SS304 case, these gauges are ideal for industries such as pharmaceuticals, chemicals, oil & gas, and food & beverages. Available in various dial sizes, they offer options for dry or liquid-filled configurations to suit applications with vibrations. Enhance your operational reliability with Adarsh's robust pressure measurement solutions.

# ADARSH

<http://www.adarshpressuregauge.com/>



*The ADATA R100 Magnetic Power Bank—a sleek and powerful charging solution designed for modern devices.*

### ADATA R100 MAGNETIC POWER BANK

The ADATA R100 Magnetic Power Bank—a sleek and powerful charging solution designed for modern devices. With a 10,000mAh capacity, it offers ample power to keep your gadgets running throughout the day. The magnetic wireless charging feature ensures effortless alignment and charging for MagSafe-compatible iPhones and Qi-enabled Android devices, delivering up to 15W of wireless power. Additionally, the USB-C and USB-A ports support up to 20W fast charging, allowing you to charge multiple devices simultaneously. Its compact design includes a foldable stand for hands-free viewing, making it a versatile companion for your on-the-go lifestyle.



<https://www.adata.com/>



*The ADATA R100 Magnetic Power Bank—a sleek and powerful charging solution designed for modern devices.*

## PARA Tech Product Spotlight

### Advance cable's

Empowering the Future of Electric Mobility with Advance Cable's EV Solutions.

Advance Cable is revolutionizing EV charging infrastructure with innovative, reliable, and efficient solutions tailored for modern electric vehicle needs.

Premium EV Charging Cables: Engineered to meet international standards, our charging cables deliver exceptional durability, safety, and performance, ensuring seamless compatibility with diverse EV models.

State-of-the-Art Connectors: Designed for optimal reliability and ease of use, our connectors guarantee a smooth and hassle-free charging experience.

Comprehensive Charging Solutions: From residential charging setups to commercial and public installations, our solutions are crafted to meet the evolving demands of electric mobility.

Commitment to Sustainability: Combining advanced technology with environmental stewardship, we empower businesses and individuals to embrace greener transportation solutions confidently.

Elevate your EV charging infrastructure with Advance Cable's trusted expertise.

As India accelerates towards a sustainable transportation future, Advance Cable Technologies (ACT) stands at the forefront, delivering cutting-edge solutions tailored for the electric vehicle (EV) ecosystem. With a commitment to innovation and quality, ACT offers a comprehensive range of products designed to meet the diverse needs of the EV industry.

#### Key Offerings:

Coiled (Spiral) Charging Cables: Ergonomically designed to connect charging stations to vehicles, these cables are space-efficient and available with 16A or 6A Indian or European plugs, AC-CCS type plugs, or AC-GBT plugs.

Cable Harnesses & Interconnects: Manufactured for various vehicle categories, including 2-wheelers, 3-wheelers, passenger vehicles, and commercial vehicles. ACT's facilities boast crimping capabilities up to 16 tons and pull force testing for cables up to 120 sqmm, ensuring durability and reliability.

Quality Assurance: Every harness undergoes rigorous testing to verify all parameters, ensuring optimal performance and safety.

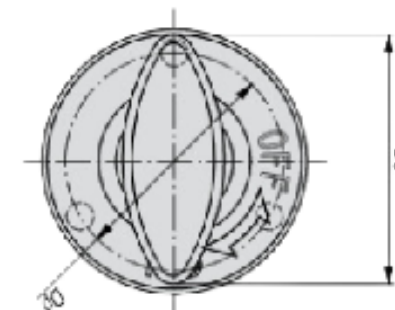


**Advance Cable is revolutionizing EV charging infrastructure with innovative, reliable, and efficient solutions tailored for modern electric vehicle needs.**



<https://www.advancecable.in/index.html>

### AIROLL SERIES 100 GRAVITY CONVEYOR ROLLERS



The AIROLL Series 100 Gravity Conveyor Rollers are ideally suited to be fitted in light duty and medium duty roller conveyors. It has a very free running bearing which means that very small and lightweight products can still be conveyed easily by gravity. It can also be used in belt conveyors as support roller.

#### Product Features and Options –

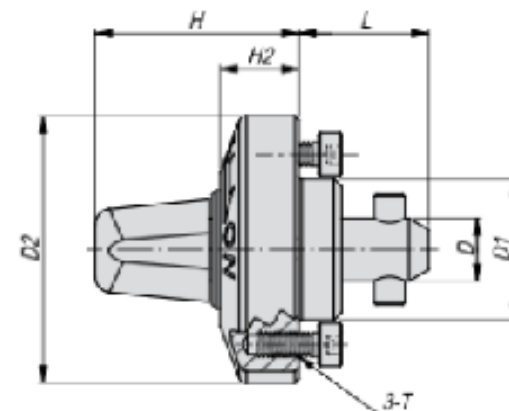
In Series 100 Gravity Conveyor roller Deep Groove Ball Bearing permanently sealed in Polymer Bearing Housing

These Rollers can bear maximum impact load on it.

Bearings are protected from dust

Material Option: Mild Steel | Stainless Steel

Various Tube & Shaft Options.



<https://www.airoll.in/>

*The AIROLL Series 100 Gravity Conveyor Rollers are ideally suited to be fitted in light duty and medium duty roller conveyors.*



## PARA Tech Product Spotlight

### STREAMLINE YOUR INDUSTRIAL OPERATIONS WITH INVT PLC HMI!



#### Key Features :

Seamless Integration: Combines PLC control with HMI for real-time monitoring and control.

User-Friendly Interface: High-resolution touchscreen for smooth operation.

Robust Performance: Built to withstand demanding industrial environments.

Customizable Solutions: Tailored for manufacturing, energy, and automation industries.

Enhanced Connectivity: Supports Modbus, Ethernet, and other protocols for smarter control.

#### Applications:

Manufacturing | Energy Management | Automotive | Oil & Gas | Food Processing  
Ecosys Efficiencies brings you a reliable, cost-effective, and smart solution to take your industrial automation to the next level.

*INVT PLC HMI combines advanced Programmable Logic Control (PLC) with an intuitive Human Machine Interface (HMI) to deliver unmatched efficiency, precision, and performance in industrial automation.*



<https://www.ecosysglobal.co.in/>

### AUTOMATION OF FZBRIC FORMING MACHINES

A.T.E. Enterprises Private Limited offers comprehensive automation upgrades for aging fabric forming machines, addressing challenges like low production efficiency, high power consumption, frequent breakdowns, and inconsistent warping lengths.

#### Key Features:

Electrical System Overhaul: Upgrading outdated electrical components with modern technology to enhance reliability.

ATE Group

PLC and Drive Replacement: Substituting obsolete PLCs and drives with the latest versions to improve control and performance.

Customized Operations: Enabling tailored functionalities for machines utilizing embedded cards.

Panel Work and Logic Modification: Implementing new process integrations and modifying logic to suit specific production needs.

Old fabric forming machines have a number of problems such as low production, efficiency, high power consumption, frequent breakdowns unequal length of warping, and the like.

A.T.E.'s automation upgrade for old fabric forming machines improves machine efficiency and productivity, allowing a machine to be run at higher speeds. Even old/stopped machines can be put back into production.



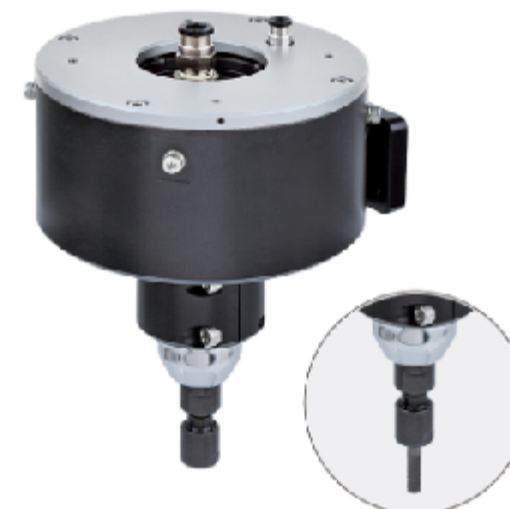
*A.T.E.'s automation upgrade for old fabric forming machines improves machine efficiency and productivity, allowing a machine to be run at higher speeds.*



<https://www.ategroup.com/>



### RADIAL COMPLIANT DEBURRING TOOL FOR ROBOT(TRG30)



*Radial Compliant Deburring Tool for Robot (TRG30) is used to remove the thicker burrs on curved edges.*

#### product information:

Weight: 0.5 (in Kg)

TRG30

Deburring Tool For Robot, Compliant type : Radial, Applications: Curved edge, Used to remove the thicker burrs on curved edges. Suitable for plastic, die-casting and machined workpieces.

#### Features:

-Used to remove the thicker burrs on curved edges.

-Suitable for plastic, die-casting and machined workpieces.

-Good for large burrs on complex curved edges.

-Compact design with strong compliance force, utilizing pneumatic control to handle ultra-small gaps. Supports highly sensitive radial compliance, ensuring precise surface finishing.

-Applicable material: Aluminum, copper, steel.



<https://www.amalcontrols.com/>

### ROLLER CONVEYORS ARE IDEALLY SUITED



*Roller Conveyors are ideally suited for moving products in a manufacturing line or warehouse, that otherwise may not be handled on a Belt Conveyor.*

Roller Conveyors are ideally suited for moving products in a manufacturing line or warehouse, that otherwise may not be handled on a Belt Conveyor. Roller conveyors are extremely rugged and ideal for extreme handling. Various types of Roller Conveyors can be designed and implemented depending on the requirements.

One of the most commonly used roller conveyors is the Gravity Roller Conveyor- for economical non-pauperized transfer of material. Such conveyors rely on the operator pushing the product on the conveyor- or- the product moving down an inclined conveyor due to gravity.

Powered Roller Conveyors are conveyors where the rollers are powered and power transmitted to each of the roller through a chain. This is ideal for moving heavy boxes and more demanding applications.

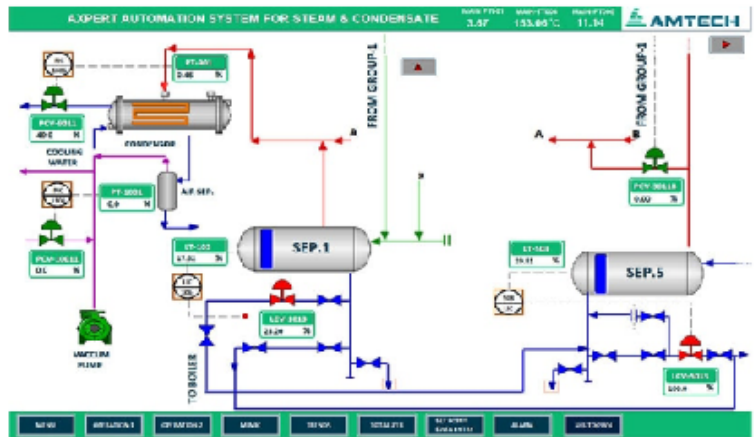
The Roller Conveyors can be custom designed in different lengths & widths. Roller type can also be customized to different diameters / special coatings depending on the application. Accessories such as sensors, speed control devices, pneumatic stoppers may be fixed on the conveyor as per requirement.



<https://www.alstrut.com/>

# PARA Tech Product Spotlight

## The JET MOVE 6XX SERVO MOTOR CONTROLLERS



Designed for industrial automation and motion control, The JetMove 6XX- Servo Motor advanced controllers ensure seamless operation and enhanced productivity.



<https://ambetronics.com/>

## ONLINE IoT DATA CONVERTERS FOR DATA TRANSMISSION - AMBETRONICS.

In the realm of industrial safety, Ambetronics proudly presents our IoT-based Online Data Converter, a cutting-edge solution designed for Wireless IoT Data Transmission in industries and factories. Tailored to meet the diverse needs of the Industrial Automation Engineers, this converter series promises seamless data communication with utmost efficiency.

- FEATURES:
- Flexibility and High Performance
  - Adaptable to various applications with advanced technology for optimal performance.
  - Thorough Quality Control
  - Products undergo rigorous quality control and testing before reaching customers.
  - Extended Communication Range
  - RS-232 to RS-485 Converter extends communication distances up to 1200 meters.
  - Isolated Connectors
  - Dedicated connectors for RS232 and RS485 signals, ensuring secure and isolated connections.
  - LoRa Technology
  - RS-485 to Wireless Transceiver utilizes LoRa technology for long-range wireless communication.
  - Secure Data Encryption
  - Incorporating an extra layer of security, Ambetronics' On-line Data Converter series ensures secure data encryption.



In the realm of industrial safety, Ambetronics proudly presents IoT-based Online Data Converter, a cutting-edge solution designed for Wireless IoT Data Transmission in industries and factories.



<https://www.amtechelectronics.com/>



# PARA Tech Product Spotlight

## FANUC ROBOT CRX SERIES

FANUC Collaborative Robot CRX Series includes a variety of models with the payload from 5kg to 30kg. CRX is recognized for being simple to install and operate. Besides having an immediate contact stop feature for safety, motions can be taught easily with the direct teaching method, where the robot's arm is directly held and moved according to the desired motion. By using a tablet, CRX can be used immediately even by first time users. Food grade variant and paint variant are also supported.



<https://www.fanuc.com/>



FANUC Collaborative Robot CRX is recognized for being simple to install and operate.

## THE APEX DYNAMICS SMART LUBRICATION SYSTEM—YOUR ULTIMATE SOLUTION

Introducing the Apex Dynamics Smart Lubrication System—your ultimate solution for maintaining optimal performance in indust

- Key Features:
- CE & ATEX Certified: Ensuring compliance with international safety standards.
  - Supports up to 40 Lubrication Points: Efficiently manages multiple lubrication needs.
  - Adjustable Lubrication Frequency: Tailor lubrication intervals to your specific requirements.
  - Dual Control Modes: Choose between Hand-Set and PLC control for seamless integration.
  - Memory Function: Retains settings for consistent operation.
  - Fill Level Monitoring: Alerts you when lubricant levels are low, preventing downtime.

- Electrical Self-Protection: Safeguards against electrical faults for enhanced reliability.
- Designed to extend the lifespan of critical components, this system delivers precise lubrication to bearings, ball screws, and open gearing from a centralized location.
- Apex Dynamics USA.



Apex Dynamics Smart Lubrication System is an ultimate solution for maintaining optimal performance in industrial machinery.



APEX DYNAMICS, INC.

<https://www.apexdyna.com/>